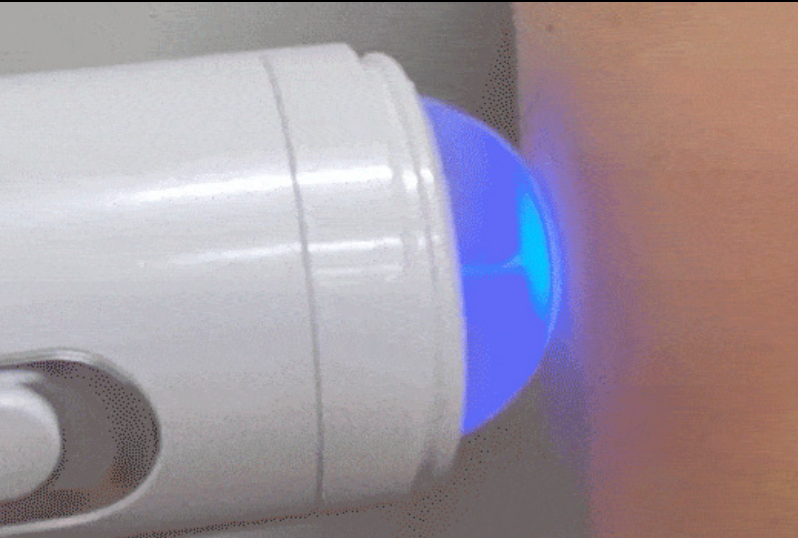


Powerful energy plasma
combining cosmetics

Next Generation Care PLINIC V2



A method that first generates plasma in a lamp and then focuses the plasma ions when it touches skin with high conductivity.

Plasma lamp massage generates heat and relaxes pores, delivering plasma energy smaller than the pores into the skin.

Know before use!

1. Ramp cleaning

Before using the plasma lamp and rolling ball, lightly wipe them with a wet tissue/dry cloth before use.



2. Battery charging

If battery discharge continues, it will affect the lifespan of the device, so keep it charged.



3. Power button

The button is located only in the center, lightly press the area below the LED.



4. charging cap

This product uses high voltage, so wear a charging cap to avoid touching it with your hands.

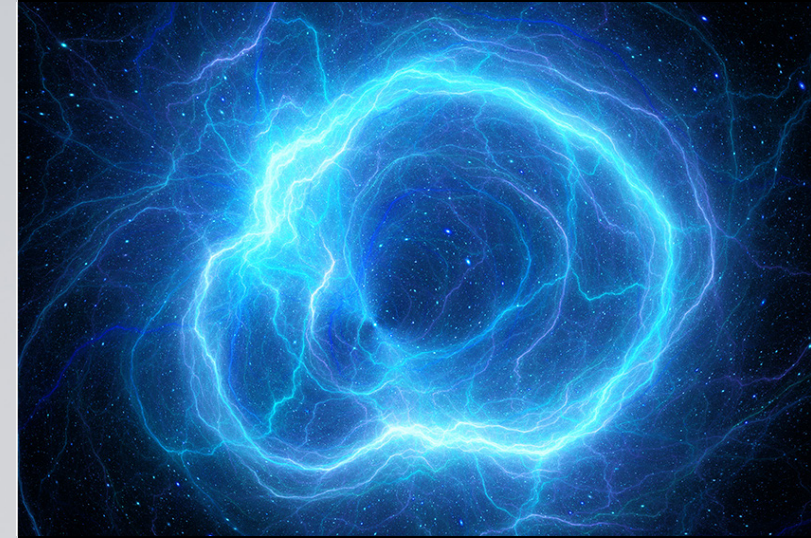


 **upriser**
PLASMA BEAUTY DEVICE



Recently attracting attention
in the medical and beauty fields

Next Generation Energy PLASMA



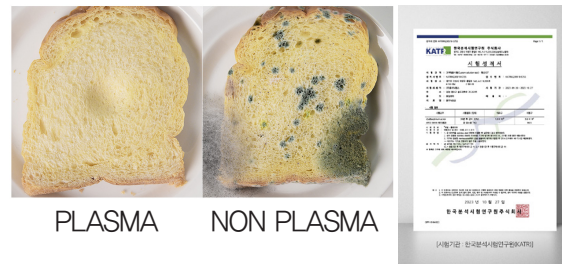
It is the fourth state of matter after solid, liquid, and gas. When strong energy is applied to gas, it enters the PLASMA state.

99% of the universe is in a plasma state, and the same goes for natural phenomena that we commonly see, such as lightning and aurora.

Plasma Care

01. Sterilizes 96.5% of acne bacteria

Check KTRI sterilization test report and slow down the growth rate of bacteria when irradiated with Plinic



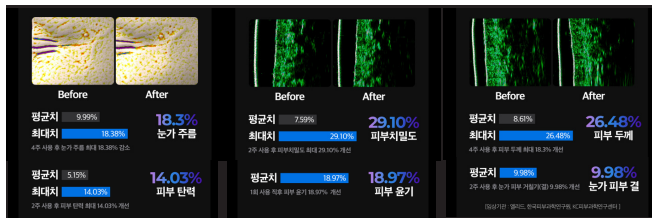
02. Maximize absorption of cosmetics

Maximizes skin penetration by utilizing the property of trying to enter the skin when it touches the skin.



03. Promote skin regeneration

Completed various clinical trials on skin elasticity, wrinkle around the eyes, etc. at a Korean clinical institution.



임상기관 : (주)엘리트 기관생명윤리위원회 / 한국피부과학연구원 / KC피부과학연구소



ALL IN ONE SKIN CARE

Combining plasma care and cosmetics(serum)

Convenience with 5 minutes of care per day

If cosmetics dry during care, take immediate action

Routine for applying cosmetics using plasma



Cosmetic Rolling

01. Inject desired ampoule (serum)

After opening the rolling container, inject desired cosmetics just below the internal thread line (25ml).



02. Combination of container&device

Insert the rolling container into the device and fit it by aligning the protrusions on the ring.



03. Step by step skin massage

Press the cheek to apply the desired amount of cosmetics and massage each area to the sound effect.

